

**BIXOLON®**



Retail



Healthcare &  
Pharmacy



Post & Parcel



Warehouse &  
Storage Handling



**Enhanced Dual-Interface,  
and Powerful Performance**

**Desktop 2 inch Label Printer**

# SLP-D220



***SLP-D220 is a brand new label printer of BIXOLON. SLP-D220 is a 2inch direct thermal Label printer to fit in anyplace. The biggest feature of SLP-D220 is Strongly enhanced Hardware functions. The printing speed is up to 6inches per second (152mm/sec) and high resolution 300dpi supported. Well-constructed sensors are movable from side to side which means it supports various paper types and particular marked media rolls. Optionally you can choose the model working with Restick™ paper as well. It does not only widen your references and applications but also for high working efficiency on your business. 1.3kg weight and 120 x 230mm dimensions optimized the use of small footprint label printer SLP-D220 in anyplace. Additionally, users can design custom labels with the label design programs that comes with the printer package without any extra cost. This program was developed by BIXOLON's in-house technology.***

## HIGHLIGHTS

- **Advanced Hardware**
  - Movable sensors available (Black mark, Gap)
  - Quicker printing speed 6 inched per second (152mm/sec)
  - Optional 300dpi model support
  - Large memory capacity (4MB Flash & 8MB SDRAM)
- **Upgraded firmware**
  - Vector font support (Scalable font)
  - Multiple programming languages recognized automatically SLCS, EPL II, ZPL II
- **Smart Software**
  - Device Font / Device Barcode
  - Command Programming
  - User-defined Paper size
  - Vector font support
  - Label design software program included
- **Value-Added Features**
  - Slim range of media rolls support (width : 15-60mm)
  - Peeler option available



SLP-D220

SLP-D220D(with Peeler)

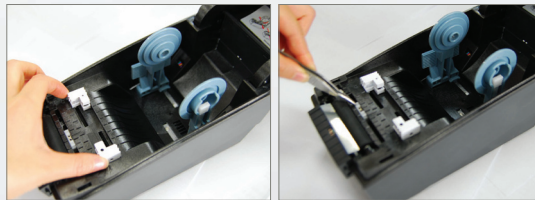
## PRODUCT FEATURES

### Slim fit of SLP-D220

The printer is suitable for every cramped condition. 1.3kg weight and 120 x 230mm dimensions optimized the use of small footprint label printer SLP-D220 in anyplace.

### Adjustable sensor (Left ↔ Right)

Well-constructed sensors are movable from side to side which means it supports various paper types and particular marked media rolls. Restick™ paper printing available with SLP-D220.



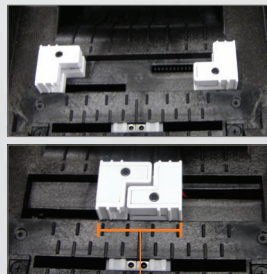
Transmissive sensor  
(Gap, Media sensor)

Reflective sensor  
(Black Mark Sensor)

### Special form of Paper guide

With this special form of paper guide, you can use thinner paper roll with SLP-D220.

- Media Width : 15~60mm
- Max. Outer Roll diameter : 130mm
- Inner roll diameter : 12.5~38mm
- Media Type : Gap, Notch, Black Mark, Continuous, Fan-fold



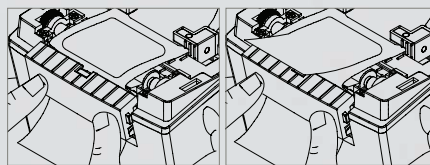
Min. width 15mm

### Various programming languages

Multiple programming languages recognized automatically. Designed with the most popular languages, the BIXOLON SLP-D220 takes the lead in a new generation of 2" direct thermal label printer.

### Peeler Option support

BIXOLON SLP-D220 provides you even more powerful performance with Peeler option. Easily peel off label part of paper and save your time using this function.



Peeler option

## SPECIFICATIONS

### PRINT

- PRINTING METHOD : Direct Thermal Printing
- PRINTING SPEED : Max. 6 inches per second (Max. 152mm per second)
- RESOLUTION : Standard : 203dpi(8dot/mm)  
Optional(SLP-D223) : 300dpi(11.81dot/mm)
- PRINTING WIDTH : 54mm
- PRINTING LENGTH : 6 ~ 2,000mm
- CHARACTER SET : Alphanumeric Character : 95  
Extended Character : 128 X 23 pages  
International Character : 32  
Resident Bitmap Fonts : 10  
True Type Fonts

### PAPER

- TYPES : Gap, Notch, Black Mark, Continuous, Fan-Fold
- WIDTH : 15~60mm
- ID : 12.5~38mm
- OD : Max. Ø 130mm(5.1")

**SENSOR** : Transmissive sensor, Reflective sensor (Position adjustable), Head Open sensor

### BAR CODES

- 1D : EAN-8, EAN-13, Code 39, Code 93, Code 128, I 2 of 5, ITF, Coda bar, UPC-A, UPC-E, IMB
- 2D : PDF417, QR code, Maxi code, Data Matrix

**EMULATION** : SLCS, EPL II, ZPL II

**DRIVER** : Windows Driver, Z Driver(zoom), Linux CUPS Driver

**INTERFACE** : Standard : Serial + USB  
Optional : Serial + Ethernet

**RECEIVE BUFFER** : 256 Kbytes

**NV IMAGE** : 64 Kbytes

### RELIABILITY

- PRINTER UNIT : 15 month
- TPH : 6 month
- Auto Cutter : 6 month

**POWER SUPPLY (SMPS)** : Input AC : 100~240V / 50~60Hz, 1.5A  
Output DC : 24V, 2.5A

**OPERATING TEMPERATURE** : 0 ~ 45°C

**DIMENSIONS** : 120 X 230 X 170 (W X L X Hmm)

**WEIGHT** : 1.36kg(Set 2.46kg)

### OPTION

- PEELER(SLP-D220D/SLP-D223D)
- ETHERNET(SLP-D220E/SLP-D223E)



**BIXOLON®** www.bixolon.com

This publication contains product descriptions without obligation.  
All features and specifications are subject to change without notice. September 2012

#### BIXOLON Headquarters

Address 7-8th FL, Mirraeasset Venture Tower, 685,  
Sampyeong-dong, Bundang-gu, Seongnam-si,  
Gyeonggi-do, 463-300, KOREA  
Tel +82 (0) 31 218 5500 Fax +82 (0) 31 218 5589  
E-mail sales@bixolon.com

#### BIXOLON America Inc.

Address 3171 Fujita St. Torrance, CA 90505  
Tel +1 858 764 4580 Fax +1 310 257 6869  
E-mail sales@bixolonusa.com

#### BIXOLON Europe GmbH

Address Tiefenbroicher Weg 35, 40472 Düsseldorf  
Tel +49 211 68 78 54 0 Fax +49 211 68 78 54 20  
E-mail sales@bixolon.de